

inteleX Quality Management System

For a [Live Demo](#) or [Free Trial](#):

Call 416-599-6009

Email inteleX@inteleX.com



The InteleX Quality Management System includes these modules:

- ▶ Quality Nonconformances & Product Defect Tracking
- ▶ Supplier Management
- ▶ Supplier Nonconformance
- ▶ Customer Management
- ▶ Quality Objectives and Activities
- ▶ Quality Policy
- ▶ Document Control
- ▶ Records Management
- ▶ Training Management
- ▶ Internal & External Communications
- ▶ Audits Management
- ▶ Nonconformances, Corrective / Preventive Actions
- ▶ Management Review Tracking
- ▶ Legal and Other Requirements Management
- ▶ Permits and Related Activities
- ▶ Maintenance, Measurement & Monitoring
- ▶ Emergency Response
- ▶ Operational Control

Please contact InteleX for detailed brochures on any of the above modules.

The InteleX Quality Management System (QMS) is a 100% web based, highly configurable solution that helps organizations track, analyze, and report on quality management initiatives including: product defect tracking, supplier management, and corporate objectives and activities.

Quality Management System Overview

Managing quality performance requires a comprehensive approach. An organization must carefully consider and control its activities to ensure all requirements are met. The InteleX QMS has been designed to assist organizations in implementing and maintaining this comprehensive approach by delivering tools structured around the ISO 9001:2000 international standard for Quality Management.

The InteleX QMS is a centralized management system that provides a portal to critical quality information and facilitates quality performance improvement through requirement tracking, notifications and real-time management reporting. It has been designed to streamline and automate quality management processes and assist in the effective implementation of corporate wide quality initiatives.

Data Management for ISO 9001:2000

The InteleX Quality Management System is structured per the ISO 9001:2000 international standard for Quality Management. Though not all organizations using the InteleX system pursue this management system framework, all users benefit from the proven approach set by this international quality standard.

System Implementation

Pre-loaded QMS Project Plan

The InteleX QMS allows organizations to create a project timeline and accurately track progress of the Quality Management Program.

Step-by-Step Implementation

By specifying the date you want to begin implementation and the date you want to be registered, the InteleX QMS will determine a target start date and target completion date for each and every implementation step.

High Level Benefits

- ▶ A single, organization-wide system to manage all Quality Management information and initiatives
- ▶ Centralized management of quality related activities and requirements that drive corporate performance
- ▶ Web based tracking forms, analysis tools, and roll-up reporting facilitates continual improvement
- ▶ Document and records control facilitates due diligence with streamlined management, distribution and archiving
- ▶ Improves performance and increases efficiency through process automation
- ▶ Rolls up QMS data in real-time to multiple management levels ensuring nothing falls through the cracks
- ▶ Improves audit results and significantly reduces preparation time through reporting tools
- ▶ Ensures management system requirements are always met
- ▶ Saves time through automated task management
- ▶ Eases audit preparation and improves audit success
- ▶ Structured per the ISO 9001:2000 Quality Management System standard

INTELEX

www.inteleX.com/quality

inteleX Quality Management System

For a **Live Demo or Free Trial:**
Call 416-599-6009
Email intellex@intelex.com

Guided QMS Implementation Plan

The InteleX QMS provides numerous checklists and examples for all the necessary steps of implementation regardless of the organizational structure, size and number of locations.

Hundreds of pages of ISO 9001:2000 Reference Material

The "InteleX Reference Library" contains detailed concepts, samples, templates and guidance aimed at assisting your organization in achieving a well rounded QMS.

Daily Status Reported as "% Complete"

The InteleX QMS tracks implementation progress of the organization and continuously computes a percent complete score. This real-time information is invaluable when reporting to top management.

Cost and Time Savings

In-house Implementation or Outsourcing?

Organizations facing quality system implementation may not have the internal expertise available to efficiently complete the project while the need to completely outsource can be quite costly. The InteleX QMS provides users with the knowledge and expertise to successfully implement a quality management system and achieve ISO 9001:2000 on their own.

Long Term Value of Continual Improvement

The InteleX QMS enables organizations to realize regular savings by facilitating continual improvement and providing years of value beyond its initial cost.

Efficient Use of Staff Resources

The InteleX QMS provides "beginner" users with a general roadmap for ISO implementation making the time spent consulting with management system "expert" users more valuable by concentrating on issues specific to their company's needs. Quality management system experts can then focus on advanced quality issues rather than wasting time with the basics.

Location	Task Type	Description	Due Date
ABC Company	CFAR: Initiated	CFAR: 00026 - Corrective Action	Wednesday, December 11, 2002
ABC Company	CFAR: Initiated	CFAR: 00030 - Corrective Action	Wednesday, December 11, 2002
ABC Company	CFAR: Initiated	CFAR: 00033 - Corrective Action	Monday, January 20, 2003
ABC Company	CFAR: Initiated	CFAR: 00045 - Measure corrective	Tuesday, January 28, 2003
ABC Company	CFAR: Initiated	CFAR: 00047 - Corrective Action	Tuesday, February 18, 2003
ABC Company	CFAR: Initiated	CFAR: 00048 - Preventive Action	Tuesday, February 18, 2003
ABC Company	Safety Accident: Initiated	AA:00005-Accident Report	Tuesday, February 25, 2003
ABC Company	CFAR: Initiated	CFAR: 00050 - Preventive Action	Thursday, March 20, 2003
MACKENZIE	Audit Follow Up	Reassess legal requirements related to significant aspects	Tuesday, March 25, 2003
ABC Company	Document Review	Document Control Summary	Thursday, April 03, 2003
ABC Company	Document Review	PDF - General Modules	Thursday, April 03, 2003
ABC Company	Document Review	InteleX Technologies Profile	Thursday, April 03, 2003
ABC Company	CFAR: Waiting for Approval	CFAR: 00034 - Corrective Action	Tuesday, April 15, 2003
ABC Company	Open Communication	Presentation to Management group is overdue	Friday, April 18, 2003
ABC Company	NCR: Initiated	No linkage between Out of Control Condition and TIC calculation	Wednesday, April 23, 2003
DEMO	Permit Activity	Submit emissions certificate	Friday, May 02, 2003
ISOsoft DEMO	Quality CFAR: Waiting for Approval	CFAR: 00003 - Corrective Action	Friday, May 09, 2003
ABC Company	Incident: Initiated	During routine grass cutting and maintenance works a fuel drum was damaged to be	Tuesday, May 13, 2003

The "My Tasks" screen displays a personalized inventory listing of all tasks assigned to a user from throughout the InteleX system. The inventory is listed in chronological order and displays the task description, task type and due date. Each task can be clicked on to display additional information.

Reporting Features

Implementation Progress Reporting

The InteleX QMS provides users with "boardroom quality" reports (in printable format and online) that can be used to communicate progress to top management. Reports include: percentage of implementation progress, total cost of implementation, upcoming implementation activities, and much more.



Improved Communications, Participation & Knowledge Transfer

inteleX Quality Management System

For a [Live Demo](#) or [Free Trial](#):
Call 416-599-6009
Email inteleX@inteleX.com

Daily, Monthly, and Annual Performance Reporting

Reports can be generated for any set of data based on specified "from" and "to" dates and can include both current and historical information. The InteleX QMS includes pre-formatted reports including: quality nonconformances report, outstanding audits follow up report, supplier nonconformances report, and many more.

User Needs

The InteleX System enables organizations to configure user views that specify what functionality and information is available to each user or user group. By tailoring the user experience to address specific user needs, organizations not only greatly improve efficiency, but also ensure that each stakeholder can access exactly the data they need, exactly when they need it.

Platform Features

Modular

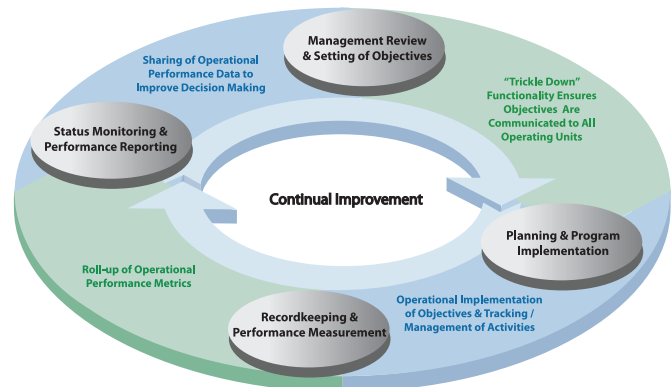
The InteleX System is modular and open to integration with other external databases. This comprehensive approach centralizes tracking and provides access to all critical quality related information improving due diligence, operational efficiency, and increased ability to achieve corporate quality objectives.

User Friendly

The InteleX QMS is extremely user friendly and ensures quality related information is not only captured effectively but is also readily available to personnel needing access or alerts. The InteleX System provides comprehensive work flow tracking, a welcomed asset to be leveraged by operational staff.

Extensive and Fail Proof Compliance Management Architecture

The InteleX QMS includes comprehensive tools for managing due dates, task lists and reminders associated to maintaining permits, licenses and regulatory requirements. Complete with online forms, built in work flow, and escalating email notifications of critical activities, the InteleX system is a fail proof approach to ensuring all compliance requirements are met.



Continual Improvement Through Improved Information Flow

Facilitates Information Flow

The InteleX QMS facilitates information flow from operational activities to management personnel. It enables real-time data roll-up of daily activities and drives visibility with "boardroom quality" reporting tools and user specific configurable Manager's Dashboards.

Modular, Yet Completely Integrated

The InteleX QMS System is comprised of many unique modules, each designed to address a specific quality management process. Whether reporting incidents, tracking training or managing documentation, the InteleX QMS provides the right tools to the user that needs them, while reducing duplication of data and effort through internal and external database linkages.

This modular structure enables the system to integrate many unique management processes into one central, web based portal. When combined together in the same system, these modules form a seamlessly integrated and fluid management system solution.

Each InteleX module is entirely self contained enabling organizations to utilize them as stand-alone solutions or to select a specific combination of modules to address their unique needs.

Security groups can be created to control access to the modules within the InteleX system. This enables individual users or groups to have access to only the modules needed, while all data is still hosted in a central information portal.

The Intelex Quality Management System includes the following suites of modules:

Quality Management Suite

Quality Nonconformances & Product Defect Tracking

This module offers a powerful yet user friendly approach for the reporting, tracking, and analysis of problems related to the quality of an organization's products. It meets and exceeds requirements of ISO 9001:2000, TS 16949, AS 91000 and other quality system approaches.

Supplier Management

This module enables the scheduling, notification and archiving of supplier evaluation activities and results. Easily access and categorize supplier details such as name, number, and current performance rating.

Supplier Nonconformance

This module helps organizations maintain supplier records and track and archive supplier nonconformances. It simplifies the management of supplier investigations, nonconformance details, and actions taken.

Customer Management

This module addresses customer management needs and enables the scheduling, tracking, and analysis of customer records. Easily identify, track, and evaluate nonconformances and generate appropriate management reports.



Quality Objectives and Activities

This module drives quality performance improvement and is dedicated to establishing, tracking and reporting on quality management programs and activities.

Quality Policy

This module is specifically designed to streamline the control, tracking and communication of an organization's quality, safety, and environmental policies.

Document and Records Management Suite

Document Control

This module works with all other Intelex modules and integrates system wide attachments and document links. All documents stored within the Document Control Module are controlled per ISO 14001 requirements, indexed to ensure controlled distribution, and archived to maintain all revisions and revision information.

Records Management

This module lets you track the location, person responsible and review cycle for critical quality related records. Electronic and external records are tracked through web based forms when review dates are pending.

Training & Communications Management Suite

Training Management

This module lets you track all training, qualifications and licenses through course scheduling, history keeping and roll-up reporting. All staff can receive email notifications of upcoming courses and can access a personalized "My Training" calendar.

Internal / External Communications

This module enables you to track and report internal and external communications entered into the system through web based forms with automatic email notification to the person(s) responsible.

inteleX Quality Management System

For a **Live Demo** or **Free Trial:**
Call 416-599-6009
Email inteleX@inteleX.com

Compliance Management Suite

Legal and Other Requirements Management

This module lets you manage the review, update and implementation of legislative requirements from Federal, State, local and regulatory agencies.

Permits and Related Activities

This module enables you to track, alert and report on the activities and requirements needed to maintain compliance to federal, state / provincial and local regulations. Permits and related activities can be tracked, updated, and maintained along with corporate wide mandates.

Emergency Response

This module enables the scheduling, notification, and archiving of emergency response tests and situations meeting ISO 14001 and OHSAS 18001 emergency preparedness and response requirements.

Maintenance, Measurement & Monitoring

This module lets you track, notify and record the completion of maintenance, measurement and monitoring activities utilizing document attachments, email notifications and a centralized calendaring system.

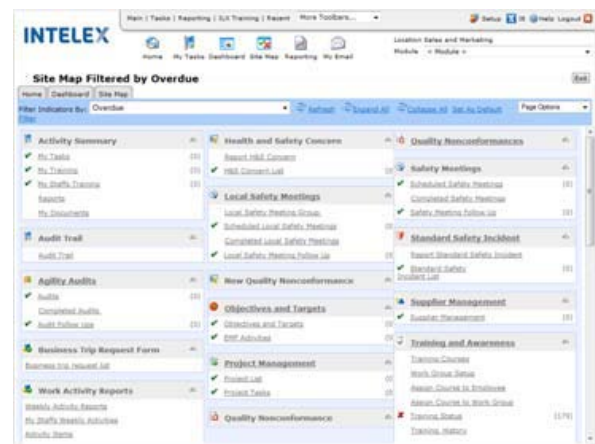
Operational Control

This module lets you track and report operational equipment maintenance activities. Activity information can be analyzed and reports can be generated for supervisors, plant managers, and management teams.

Checking and Corrective Actions Suite

Audits Management

This module provides you with a centralized online scheduling and tracking tool to consistently prepare you for enterprise compliance and internal audits.



The InteleX Dashboard provides a 60,000 ft. overview of all data managed within the InteleX System and its various Modules. Completed tasks are indicated and outstanding issues are flagged.

Nonconformances, Corrective / Preventive Actions

This module lets you track, analyze, and report on nonconformances and corrective / preventive actions organization wide. Data can be rolled up by location, region, or department.

Management Review Tracking

This module lets you track management review meetings, generate follow-up actions, and store archived meeting information.



Please contact InteleX for detailed brochures on any of the above modules. For more details on any InteleX System, Suite or Module, visit www.inteleX.com.

inteleX Quality Management System

For a **Live Demo** or **Free Trial:**

Call 416-599-6009

Email inteleX@inteleX.com

The InteleX Platform

The InteleX Quality Management System includes the InteleX Platform, a fluid and feature rich environment leveraged by all InteleX Systems and Modules

- ▶ InteleX's philosophy on data management is **"The user does not find the data; the data finds the user"**.
- ▶ With **"Escalating Email Notification"**, the **"Manager's Dashboard"** and user specific task management screens, InteleX ensures the right data is seen by the right people at the right time.
- ▶ **A 100% web based interface** lets users easily access InteleX Systems and Modules through any web browser.
- ▶ **The Folder Locations** feature enables data to roll-up to appropriate management levels through a hierarchal organization/database structure.
- ▶ **My Tasks, My Staff's Tasks, and My Location Tasks Menus** are personalized menus listing all responsibilities, details, and update screens from a single click.
- ▶ **Automatic Escalating Email Notifications** are user configurable so that tasks can trigger unlimited escalating emails to any number of stakeholders.
- ▶ **A User Specific Performance Dashboard** provides a high-level status summary of all quality requirements, single click access to detailed information, and data roll-up for location, region, department or global operations.
- ▶ **The InteleX User Security Module** lets every user or user group have their modules, fields, locations and data access privileges controlled
- ▶ **Support is our #1 Feature...** All InteleX systems come with the best support in the business.

Business Performance Management

InteleX's web based Management System solutions are extremely flexible, enabling you to utilize any of the modules as stand-alone systems, or combine multiple modules to form your own tailored Management System solution.

Pre-configured systems include the:

- InteleX Safety Management System incorporating OHSAS 18001.
- InteleX Environmental Management System incorporating ISO 14001.
- InteleX Quality Management System incorporating ISO 9001:2000.



Contact us today and see how InteleX can help you with your quality, safety, environmental, or general Business Performance Management needs.

**InteleX Technologies Inc. • 366 Adelaide Street West, Suite 100 • Toronto, ON M5V 1R9
T: 416-599-6009 • F: 416-599-6867 • E: inteleX@inteleX.com • www.inteleX.com**

Copyright © 2007, InteleX Technologies Inc. All Rights Reserved.

System Technology and Hosting

ASP Hosting Services

All InteleX Modules & Packages are available as InteleX Hosted applications. InteleX provides turnkey server support, 24/7 security and continuous onsite and offsite database backups.

In House Installations

InteleX's Platform is designed to leverage an organization's current infrastructure to provide facility, region and world-wide access.

Scalability

The InteleX System is perfect for the smallest of organizations, and is powerful enough to streamline the processes of a worldwide organization.

Database Integration

The InteleX System is built with an XML structure that enables easy database integration and data migration.

Customization Services

All forms, workflow and follow up processes within the InteleX system can be custom configured per a client's request.

Industry Standard Technology

The InteleX System is compatible with Microsoft Operating Systems, SQL Server and Oracle databases, and Internet Explorer and Netscape browsers to ensure easy installation, roll-out and system maintenance.

Experienced Professionals

InteleX has highly technical representatives available to assist with all your system installation, database integration and maintenance needs.

Please visit www.inteleX.com/quality

INTELEX