

The Environmental Sustainability Metrics Module enables businesses to track, analyze, and report on all sustainability data and implement short- and long-term corporate sustainability strategies with ease.

Benefits

► **Communicate sustainability performance to stakeholders**

Use comprehensive, boardroom-quality sustainability reports and up-to-date metrics to support strategic branding initiatives and communicate your environmental achievements to stakeholders.

► **Assess the status of your sustainability programs in real-time from a centralized system**

Track, analyze and report on accurate, comprehensive and current sustainability data with the click of a button through instant, real-time reports and key performance indicator (KPI) dashboards. Apply sustainability benchmarks internally and across all business units, locally, regionally and worldwide.

► **Harmonize companywide business processes with your sustainability strategy**

Link your sustainability performance with your financial performance to develop integrated sustainability strategies to develop organizational synergy and optimize ROI.

► **Render your entire sustainability program completely transparent**

With access to real-time dashboards conveying all your sustainability metrics, you will gain comprehensive and accurate visibility of companywide environmental sustainability performance whenever it is required.

► **Save money by unlocking new efficiencies**

The Environmental Sustainability Metrics Module enables businesses to track, analyze, and report on all sustainability data and implement short- and long-term corporate sustainability strategies with ease.

Module Capabilities

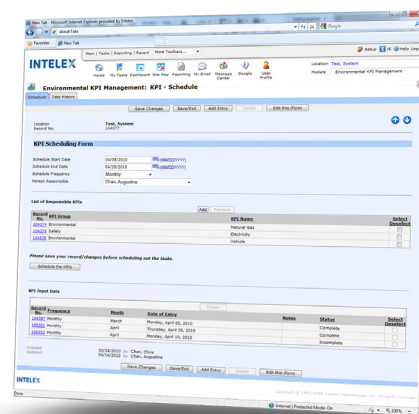
► **Monitor Sustainability KPIs:** Define and track waste, wastewater, energy and air emissions data with real-time dashboards and instant reports.

► **Track Metrics:** Track usage, cost, or quantity of all metrics associated with your sustainability activities, initiatives and programs.

► **Manage Tasks:** Use the built-in scheduler to schedule and assign sustainability-related tasks.

► **Integrate Data:** Generate reports using individual or cross-module data.

► **Monitor Supply Chains:** Expand the scope of your sustainability program to your entire supply chain by monitoring compliance through real-time metrics.



The Intelx Platform

The Intelx Environmental Sustainability Metrics Module includes the Intelx Platform, a fluid and feature rich environment leveraged by all Intelx Systems and Modules

- ▶ Intelx's philosophy on data management is **"The user does not find the data; the data finds the user"**.
- ▶ With **"Escalating Email Notification"**, the **"Manager's Dashboard"** and user specific task management screens, Intelx ensures the right data is seen by the right people at the right time.
- ▶ A **100% web-based interface** lets users easily access Intelx Systems and Modules through any web browser.
- ▶ **The Folder Locations** feature enables data to roll-up to appropriate management levels through a hierarchal organization/database structure.
- ▶ **My Tasks, My Staff's Tasks, and My Location Tasks Menus** are personalized menus listing all responsibilities, details, and update screens from a single click.
- ▶ **Automatic Escalating Email Notifications** are user configurable so that tasks can trigger unlimited escalating emails to any number of stakeholders.
- ▶ **A User Specific Performance Dashboard** provides a high-level status summary of all environmental requirements, single click access to detailed information, and data roll-up for location, region, department or global operations.
- ▶ **The Intelx User Security Module** lets every user or user group have their modules, fields, locations and data access privileges controlled.
- ▶ **Support is our #1 Feature...** All Intelx systems come with the best support in the business.



Environmental Management

Intelx's web based Management System solutions are extremely flexible, enabling you to utilize any of the modules as stand-alone systems, or combine multiple modules to form your own tailored Management System solution. Pre-configured systems include the:

- ▶ Intelx Environmental Management System incorporating ISO 14001
- ▶ Intelx Business Performance Management System incorporating ISO 14001 & 9001:2008.
- ▶ Intelx Safety Management System incorporating OHSAS 18001.
- ▶ Intelx Quality Management System incorporating ISO 9001:2008.

System Technology and Hosting

▶ ASP Hosting Services

All Intelx Modules & Packages are available as Intelx Hosted applications. Intelx provides turnkey server support, 24/7 security and continuous onsite and offsite database backups.

▶ In-House Installations

Intelx's Platform is designed to leverage an organization's current infrastructure to provide facility, region and world-wide access.

▶ Scalability

The Intelx System is perfect for the smallest of organizations, and is powerful enough to streamline the processes of a worldwide organization.

▶ Database Integration

The Intelx System is built with an XML structure that enables easy database integration and data migration.

▶ Configuration Services

All forms, workflow and follow up processes within the Intelx system can be custom configured per a client's request.

▶ Experienced Professionals

Intelx has highly technical representatives available to assist with all your system installation, database integration and maintenance needs.

Environmental Compliance

The Intelx Environmental Compliance Suite is a one stop solution for managing all of your environmental compliance and performance metrics. The suite consists of a bundled package of modules, each designed to address and manage a specific area of environmental compliance.

Modules Included:

- ▶ Air Emissions Management
- ▶ Waste Management
- ▶ Wastewater Management
- ▶ Refrigerant Management
- ▶ Environmental Sustainability Metrics.



Contact us today and see how Intelx can help you with your Environmental, Quality, Safety, or general Business Performance Management needs.

www.intelx.com